

AUTEL[®]

MaxiCharger DC HiPower Charging System

640 kW Ultra Fast Charger





Autel MaxiCharger DC HiPower is a reliable, intelligent, and scalable distributed ultra fast charging system.

Our ultra fast charging system redefines innovation in EV charging. The Power Cabinet 640kW orchestrates energy transformation and power distribution, accommodating up to 4 Dispensers. This allows for a lightning-fast charging speed of up to 650A/480kW per port, accommodating a maximum of 8 vehicles charging simultaneously. The flexible system design consisting of 8-16 modules of 40kW each will provide more possibilities for power expansion.

With the Energy Cube (Autel Matrix switching algorithm), dynamic energy management is effortless, reducing costs and optimizing power usage. Intelligent one-click guided commissioning ensures a step ahead in site construction.

Forward-thinking, the Power module is future-proof, easily expandable, and compatible with Energy Storage Systems (ESS). Whether it's for on-the-go charging, fleet management, or destination charging, MaxiCharger DC HiPower is the ultimate solution.



Power Cabinet :

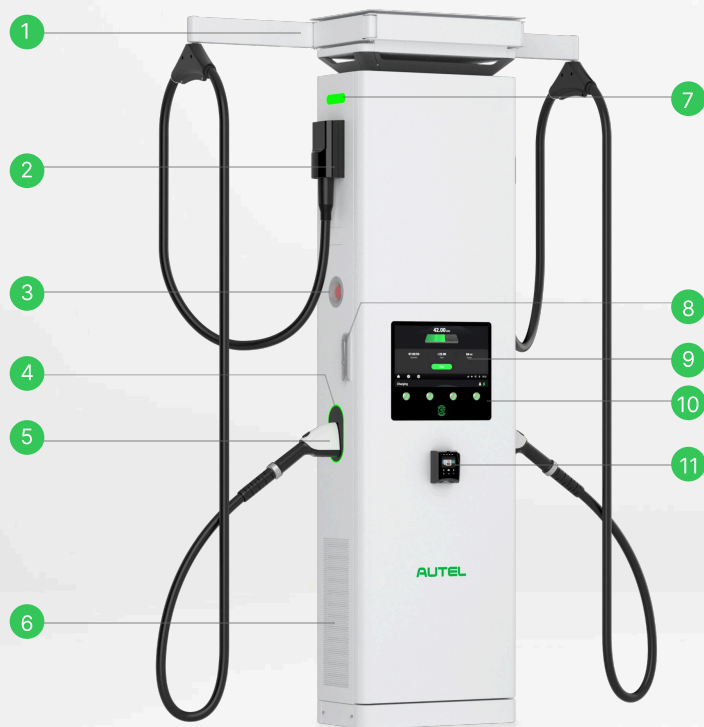
1. Handle Lock
2. Vent
3. Bracket Mounting Location
4. LED Indicator
5. Emergency Stop Button
6. Grounding Bar

Power range

320-640 kW

Adaptive voltage range

150-950 v



Charging Dispenser :

1. Cable Management System
2. Cable Exit
3. Emergency Stop Button
4. Socket Indicator
5. Charging Handle
6. Vent
7. LED Indicator
8. Handle Lock
9. Touchscreen
10. Operation Button
11. POS Device (Optional)

Max.output power for single port

Up to 480 kW

Number of outputs in the system

1-8



Reliable

- Reliable equipment: Power modules with a failure rate below 0.2% and isolated design ensure uninterrupted system operation.
- Reliable Communication: 3-channel distributed communication technology.
- Reliable Charging: Up to 99% vehicle compatibility and a 95% first attempt charging success rate.



Intelligent

- One-click guided commissioning ensures a step ahead in site construction.
- Enjoy intelligent dynamic load balancing for on-demand charging, improving the efficiency of grid electricity utilization.
- Utilizing advanced vehicle recognition technology to estimate charging time and enhance the charging experience.



Scalable

- Adapt the dispenser count based on demand, enabling simultaneous charging for up to 8 vehicles.
- The power capacity of the cabinet can be expanded from 320 kW to 640 kW by adding modules.



Fast Charging

- A robust 640 kW power pool ensures ample power output.
- Max. 480 kW single cable output power with liquid cooling system, allowing for one second of charging to drive one kilometer.

Product Configuration List (Power Cabinet)

	Output Power	Number of Dispensers	Number of Connectors	AC Input 1 and 2	DC Output 1,2,3,4	DC Output 5,6,7,8	AC Output 9,10	Weight
Liquid Cooling Dispenser	640 kW	2	4	480V ~ 415A/350kVA 3P+PE 60Hz	150-950V Nom. 500A Max. 650A/475kW	--	480V ~ 10A, 2P+PE 60Hz	1450kg

Liquid Cooling Dispenser	480 kW	2	4	480V ~ 315A/260kVA 3P+PE 60Hz	150-950V Nom. 500A Max. 650A/400kW	--	480V ~ 10A, 2P+PE 60Hz	1382kg
	360 kW	2	4	480V~ 235A/200kVA 3P+PE 60Hz	150-950V Nom. 500A Max. 650A/280kW	--	480V ~ 10A, 2P+PE 60Hz	1331kg
	320 kW	2	4	480V~ 210A/175kVA 3P+PE 60Hz	150-950V Nom. 500A Max. 650A/280kW	--	480V ~ 10A, 2P+PE 60Hz	1314kg
Air Cooling Dispenser (Boost Dispenser)	640 kW	4	8	480V ~ 415A/350kVA 3P+PE 60Hz	150-950V Nom. 300A Max. 400A/240kW	150-950V Nom. 300A Max. 400A/240kW	480V ~ 10A, 2P+PE 60Hz	1450kg
	480 kW	4	8	480V ~ 315A/260kVA 3P+PE 60Hz	150-950V Nom. 300A Max. 400A/240kW	150-950V Nom. 300A Max. 400A/240kW	480V ~ 10A, 2P+PE 60Hz	1382kg
	360 kW	4	8	480V~ 235A/200kVA 3P+PE 60Hz	150-950V Nom. 300A Max. 400A/240kW	150-950V Nom. 300A Max. 400A/240kW	480V ~ 10A, 2P+PE 60Hz	1331kg
	320 kW	4	8	480V~ 210A/175kVA 3P+PE 60Hz	150-950V Nom. 300A Max. 400A/240kW	150-950V Nom. 300A Max. 400A/240kW	480V ~ 10A, 2P+PE 60Hz	1314kg

Product Configuration List (Dispenser)

Output Power	Dispenser Type	DC Input 1 and 2	AC Input 3	DC Output 1, 2	Weight
480 kW	Liquid Cooling Dispenser	150-950V Nom. 500A Max. 650A/480kW	480V ~ 10A 2P+PE 60Hz	150-950V Nom. 500A Max. 650A/480kW	190kg
320 kW	Air Cooling Dispenser (Boost Dispenser)	150-950V Nom. 300A Max. 400A/240kW	480V ~ 10A 2P+PE 50Hz	150-950V Nom. 300A Max. 400A/240kW	160kg
240 kW	Air Cooling Dispenser (Boost Dispenser)	150-950V Nom. 300A Max. 400A/240kW	480V ~ 10A 2P+PE 50Hz	150-950V Nom. 300A Max. 400A/240kW	160kg

Technical Specifications (Power Cabinet)

AC Input	480kW (Air Cooling)	640kW (Air Cooling)
Earthing system	3P, PE (No neutral)	3P, PE (No neutral)
Input voltage	3-phase 480V AC +10%, -15% (2 Routes)	3-phase 480V AC ±15% (2 Routes)
Input frequency	60Hz	60Hz
Power factor	≥0.99	≥0.99
Harmonic distortion (THDi)	≤5%	≤5%

General Characteristics	480kW (Air Cooling)	640kW (Air Cooling)
Number of outputs (Max.)	8	8
Minimum adjustable power	40kW	80kW
Connectivity	4G, Wi-Fi, Ethernet	4G, Wi-Fi, Ethernet
Peak efficiency	≥96%	≥96%
Enclosure rating	NEMA 3S	NEMA 3S
Operating altitude	6561.7ft (2000m)	6561.7ft (2000m)
Operating temperature range	-31°F ~ +131°F (-35°C ~ +55°C)	-31°F ~ +131°F (-35°C ~ +55°C)
Storage temperature range	-40°F ~ +158°F (-40°C ~ +70°C)	-40°F ~ +158°F (-40°C ~ +70°C)
Mounting	Floor Standing	Floor Standing
Dimensions (H×W×D)	78.7×66.9×35.4 inch (2000×1700×900 mm)	78.7×66.9×35.4 inch (2000×1700×900 mm)

Certification and Standards	480kW (Air Cooling)	640kW (Air Cooling)
Safety standards	UL 2202, UL 2231-1, UL 2231-2, NEC Article 625, CSA C22.2 No. 107.1-16	UL 2202, UL 2231-1, UL 2231-2, NEC Article 625, CSA C22.2 No. 107.1-16
Certification	CSA, FCC part 15 Class A	CSA, FCC part 15 Class A
Design life	10 years	10 years
Warranty	24 months, warranty extension possible	24 months, warranty extension possible

Technical Specifications (Dispenser)

DC Output Connection	Liquid Cooled Dispenser	Air Cooled Dispenser
Charging mode	Mode 4: CCS1	Mode 4: CCS1 or J3400/NACS
Output1 power	480kW	240kW/320kW
Output1 voltage	150-950V	150-950V
Output1 current	CCS1 500A (Max. 650A)	CCS1: 300A (Max. 400A) 400A (Max. 500A) J3400/NACS: 380A (Max. 500A)
Output2 power	480kW	240kW/320kW
Output2 voltage	150-950V	150-950V

Output2 current	CCS1 500A (Max. 650A)	CCS1: 300A (Max. 400A); 400A (Max. 500A) J3400/NACS: 380A (Max. 500A)
Number of outputs	2*CCS1	2*CCS1; 2*J3400/NACS; 1*J3400/NACS+1*CCS1

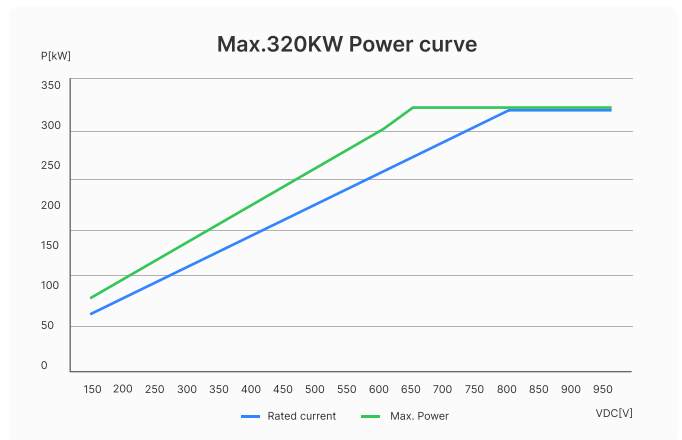
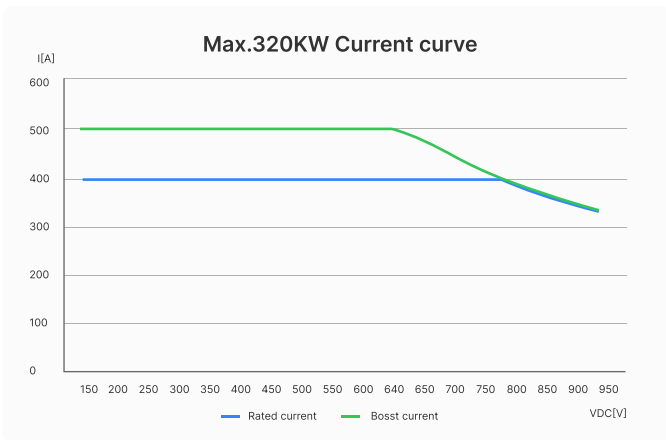
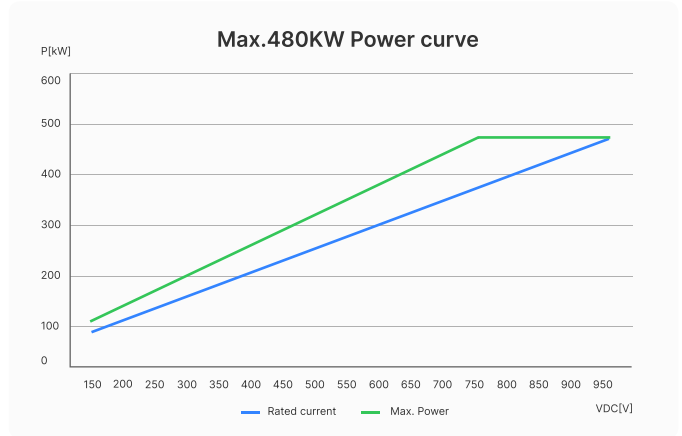
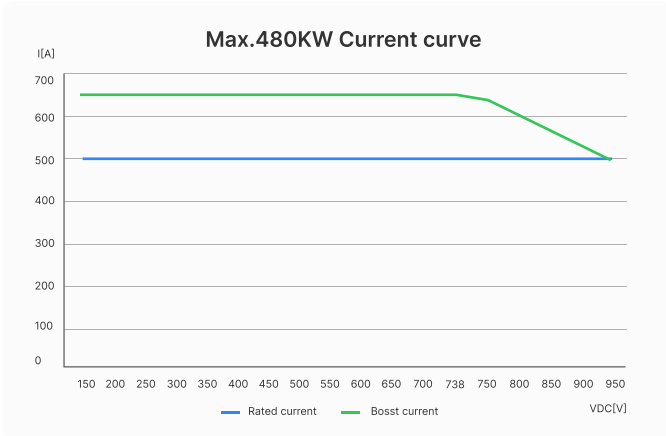
General Characteristics	Liquid Cooled Dispenser	Air Cooled Dispenser
Enclosure rating	NEMA 3S	NEMA 3S
Operating altitude	6561.7ft (2000m)	6561.7ft (2000m)
Operating temperature range	-31°F ~ +131°F (-35°C ~ +55°C)	-31°F ~ +131°F (-35°C ~ +55°C)
Storage temperature range	-40°F ~ +158°F (-40°C ~ +70°C)	-40°F ~ +158°F (-40°C ~ +70°C)
Mounting	Floor Standing	Floor Standing
Dimensions (H×W×D)	81.7×22.8×12.6 inch (2075×580×320 mm)	81.7×22.8×12.6 inch (2075×580×320 mm)
Screen type	15.6 inch LCD Touch Screen (1920*1080)	15.6 inch LCD Touch Screen (1920*1080)
Cable length	16.4ft (5m)	16.4ft (5m)

User Interface	Liquid Cooled Dispenser	Air Cooled Dispenser
Status indication	LED/LCD/APP	LED/LCD/APP
User interface	Autel Charge APP; Autel Charge Cloud Third Party Cloud	Autel Charge APP; Autel Charge Cloud Third Party Cloud
Connectivity	Ethernet	Ethernet
Communication protocols	OCPP 1.6J (OCPP 2.0.1 Optional)	OCPP 1.6J (OCPP 2.0.1 Optional)
User authentication	APP, RFID card, QR code, Credit Card (Optional)	APP, RFID card, QR code, Credit Card (Optional)

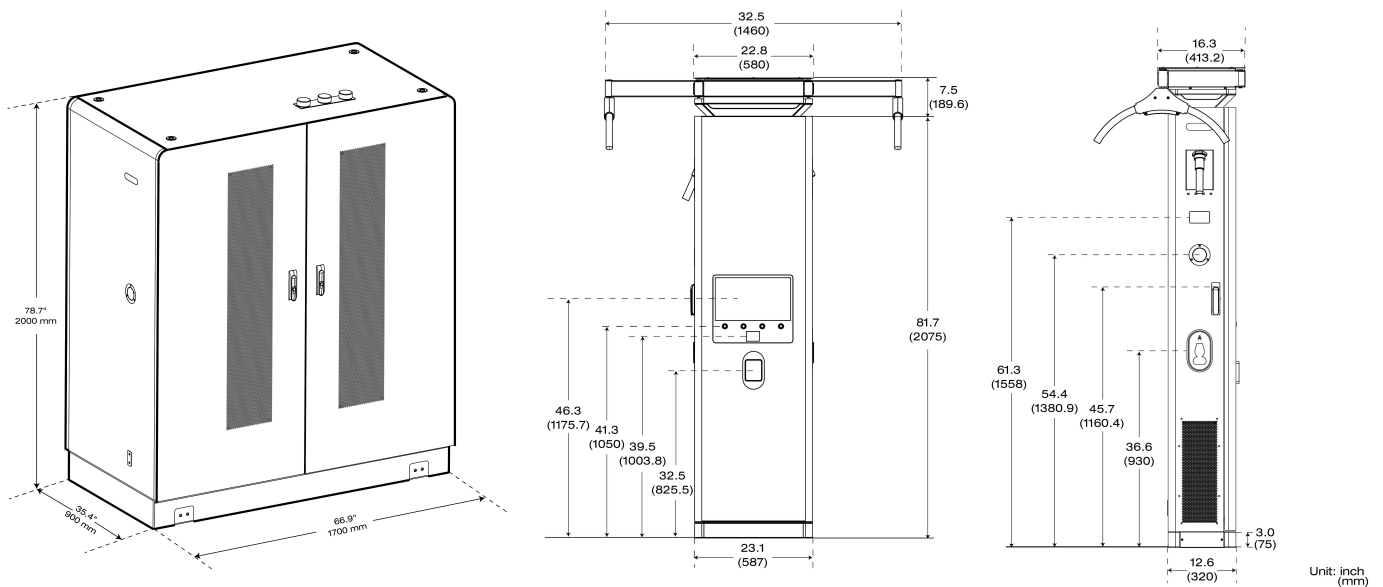
Software Update	Liquid Cooled Dispenser	Air Cooled Dispenser
Software update	OTA updates via web portal	OTA updates via web portal

Certification and Standards	Liquid Cooled Dispenser	Air Cooled Dispenser
Safety standards	UL 2202, UL 2231-1, UL 2231-2, NEC Article 625, CSA C22.2 No. 107.1-16	UL 2202, UL 2231-1, UL 2231-2, NEC Article 625, CSA C22.2 No. 107.1-16
Certification	CSA, FCC part 15 Class A	CSA, FCC part 15 Class A
Design life	10 years	10 years
Warranty	24 months, warranty extension possible	24 months, warranty extension possible

Current Curve / Power Curve



Mechanical Dimensions



Autel Digital Power Co., Ltd

Phone:(844) 765-0150

E-mail: evsupport@autel.com

Website: autelenergy.com

© Copyright 2024 Autel. All rights reserved.Specifications subject to change without notice.

